

Great Yarmouth and Waveney October 2010



Information is taken from local news sources in addition to word of mouth. Where names of businesses are not included, this indicates sensitivity, and/or the business wishing to remain anonymous

Summary

| | |
|---------------------------------------|--|
| Business confidence | ↑ |
| Unemployment | ↑ |
| Redundancies | ↑ |
| Notified vacancies to Job Centre Plus | ↑ from August (September data unavailable) |
| House Prices | ↑ |

Sectors performing particularly well this month include agriculture and food processing, particularly the local breweries. Gardline Shipping's launch of a second windfarm transfer vessel is positive news for the energy sector as windfarm projects continue to progress off the local coastline and around the UK. The completion of a £1.4m project for Starfrost, supplying freezers for a new food processing factory in Thailand, is great news for the sector in terms of international trade and relations.

Less positive stories this month was the announcement that opportunities for EastPort UK to make full use of the cranes fell through leading to the suspension of its container operation in November, and Klyne Tug's long running contract to supply tug vessels for stricken ships along the coastline being cancelled by the department for transport. However, the decision at EastPort UK could lead to greater opportunities with offshore wind.

Job Seeker Allowance rates have increased across Norfolk for the first time month on month since February 2010. Rates continue to rise in Great Yarmouth and Waveney, at a steeper rate than last month with 222 (187 on September) and 66 (56 on September) respectively.

Redundancy figures rose in Great Yarmouth this month by 153 (28.87%). The district accounts for 7.5 percent of all notifications, up three percent from last year, which is the fourth highest level behind Norwich, Breckland and King's Lynn & West Norfolk.

With the energy sector expected to be strong in this sub-region it is hoped that future job opportunities will start to offset these growing JSA and redundancy levels in the area.

House prices rose in both Norfolk and Suffolk this month which is welcome news for those anxiously waiting for a steady rise before selling. Suffolk house prices continue to be above those of Norfolk. A year ago they were roughly £5,000 above and this month they are £10,000 above.

Conclusion

A particularly strong month in terms of business, but the statistics indicate a possible underlying problem that may worsen if opportunities from sectors such as energy are not realised in the very near future.

Trading Climate & Confidence Levels

Key Facts

Breweries continue to do well in this sub-region with Adnams named Brewery of the Year 2011 and St Peters products being stocked in Asda. Retail has seen new stores opening, both physically and online as well as refurbishment.

Agriculture & Food Processing

| Positive | Negative |
|---|----------|
| Pea growers in East Anglia have signed a contract with Europe's biggest frozen food specialist, Ardo. The contract is worth a total of £3m and also secures 38 jobs at the Norbert Dentressangle freezing plant. | |
| Adnams, Southwold- brewery – has been named Brewery of the Year in the 2011 edition of the Good Pub Guide. | |
| St Peters Brewery near Bungay is going to see 3 of its ales stocked in a number of East Anglian Asda stores after winning Asdas beer competition in 2009. The brewer will also launch itself into the draught beer market after increased demand for the service from pubs. | |
| Bushells Bakery in Lowestoft has impressed judges to win the 'Best Suffolk Baker' award at the East Anglian Daily Times food and drink awards. | |

Construction

| Positive | Negative |
|---|----------|
| Gardline Shipping, Great Yarmouth - specialist boat builder has celebrated the launch of its second windfarm transfer vessel. Great Yarmouth port chaplain, the Rev Peter Paine, blessed the catamaran, Guardian 2. The boat will be used to take 10 workers on and off wind turbines off the coast of Heysham, Lancashire. | |

Creative

| Positive | Negative |
|---|----------|
| Blackwells, Great Yarmouth – print and marketing - have invested £750k in a new press to help the service to become faster and more efficient. The company can already dispatch orders that are made before 10am on the same day on some services and hope to now be able to offer this service across more products. | |

Digital

| Positive | Negative |
|---|----------|
| Martham, near Gt Yarmouth based business Comm-Tech has been awarded Platinum Partner Status by Vodafone UK making it one of only 23 nationwide to be given the status. It is hoped the award will boost business. | |

Energy

| Positive | Negative |
|---|----------|
| A generator that overturned off the coast of Lowestoft a year ago has been repaired and will soon be back at sea generating important data on wave power. The generator was created by Trident Energy and made at the Small | |

| | |
|--|--|
| and Co. Boatyard in Lowestoft. | |
| A pioneering renewable energy system which generates gas from Adnams' brewery and food waste delivered power to the National Grid for the first time yesterday. The Adnams Bio Energy plant in Reydon, near Southwold, will generate enough biogas to heat more than 230 average family homes for a year when it is running at full capacity, and the first pipe full of biomethane were injected into the grid yesterday afternoon. | |

Health and Life Sciences

A state of the art scanner has been donated to Southwold Hospital. The scanner which costs more than £50000 has been unveiled at the eye clinic and has been paid for by the League of Friends of Southwold Hospital. The machine can scan and diagnose eye problems within seconds.

Manufacturing

| Positive | Negative |
|---|----------|
| Starfrost, an engineering company in Lowestoft, has completed a project worth £1.4m to supply freezers for a new food processing factory in Thailand. The freezers can process around 2000kg of cooked chicken every hour for Golden Foods Siam, just outside of Bangkok, and will be assembled in Thailand by 20 people, including staff from the Lowestoft factory. | |

Retail

| Positive | Negative |
|--|----------|
| BrightHouse, Great Yarmouth - specialising in electronics and domestic appliances - is set to open in the Market Gates shopping centre. | |
| Palmers's department store has a new online shopping service and it is already starting to see positive effects as a customer from Australia has been able to use the service to order a gift for her daughter in England. | |
| Dominos Pizza is set to create around 25-35 full time jobs in the Great Yarmouth area. It is opening a new store on King Street at the beginning of November and is looking to recruit trainee managers and pizza makers. | |
| Lowestoft based King of Shaves is seeing its shaving products being partnered with a Japanese manufacturing and technology firm as part of its global expansion plans. They aim to grow the brand in the US and UK and currently enjoy retail sales of around £11m | |
| John Grose, Lowestoft - car dealership - work has started on a £1.6m project to modernise the premises to create a new showroom with café, workshop and extended parking area. The work will be completed in April next year. | |

Tourism

| Positive | Negative |
|---|----------|
| Tourism in the Waveney Valley has enjoyed a bumper summer, despite disappointing weather. Figures from Waveney District Council show that tourism now brings in £238m into the district and the industry supports 12pc of jobs. | |

Other

| Positive | Negative |
|---|--|
| Internet Workwear, Great Yarmouth – uniforms supplier throughout the UK – is looking to build into a million-pound business following rapid | Lowestoft based Klyne Tugs, part of the JP Knight Group has had a long running contract to supply tug vessels for stricken ships along |

| | |
|---|--|
| <p>growth with sales currently at more than £500,000 a year.</p> | <p>the coastline. The contract is set to be cancelled by the department for transport in 2011 after they said that tax payers shouldn't have to foot the bill to help stricken ships. The company said although the contract represented a significant amount of their work they still had lots of other work to concentrate on.</p> |
| <p>A Great Yarmouth police officer has developed an ingenious computerised system that offers a secure way for agencies to share up to date information and deal with issues in a joined up way. The system will help fight neighbourhood problems and help police keep track of all kinds of cases.</p> | |
| <p>HMS Dauntless has docked in the outer harbour at Great Yarmouth in support of Help 4 Heroes and Caister Independent Lifeboat charities. The £1.1bn Type. 45 destroyer is expected to be docked for around 4 to 5 days and will see the crew and staff helping to raise funds for their chosen charities.</p> | |
| <p>The government have given the go ahead for a £4m project to improve train travel in east Suffolk. The line between Lowestoft and Ipswich is set to have a passing loop built in to allow trains to be run hourly instead of every two hours.</p> | |

Other Information

Waveney District Council and Suffolk Coastal District Council will be discussing moves which would see the council management teams merge, helping deliver the best possible services and save an estimated £250,000. The two councils already share a chief executive and work closely on a number of projects.

Suffolk County Council is looking at a radical approach to outsourcing. Almost all services will be supplied by other organisations in a bid to respond to threats of government spending cuts. The council have been working on this new strategic direction since September, and could see staff directly employed by the council fall from 27,000 to between 200 and 500 people.

It has been revealed that an area around Lowestoft harbour is to be regenerated with new jobs, businesses and homes. The Lake Lothing and Outer Harbour Area Action Plan plans out development over the next 15 years. The aim is to create 1000 new jobs, providing 1500 new homes in Kirkley and to attract new industry and investment to the port.

November Headlines

150 employees at the Wessex Foods factory in Lowestoft which was destroyed by a fire in July will be made redundant.

Passion Automotive, Great Yarmouth –online car and motorbike accessories dealer – has seen an increase in sales of 35percent.

The RSPB reserve at Minsmere, south of Southwold has been designated as a Natura 2000 site, giving it the status of one of the most important sites in Europe.

Pontin's, holiday park company- has gone in to administration.

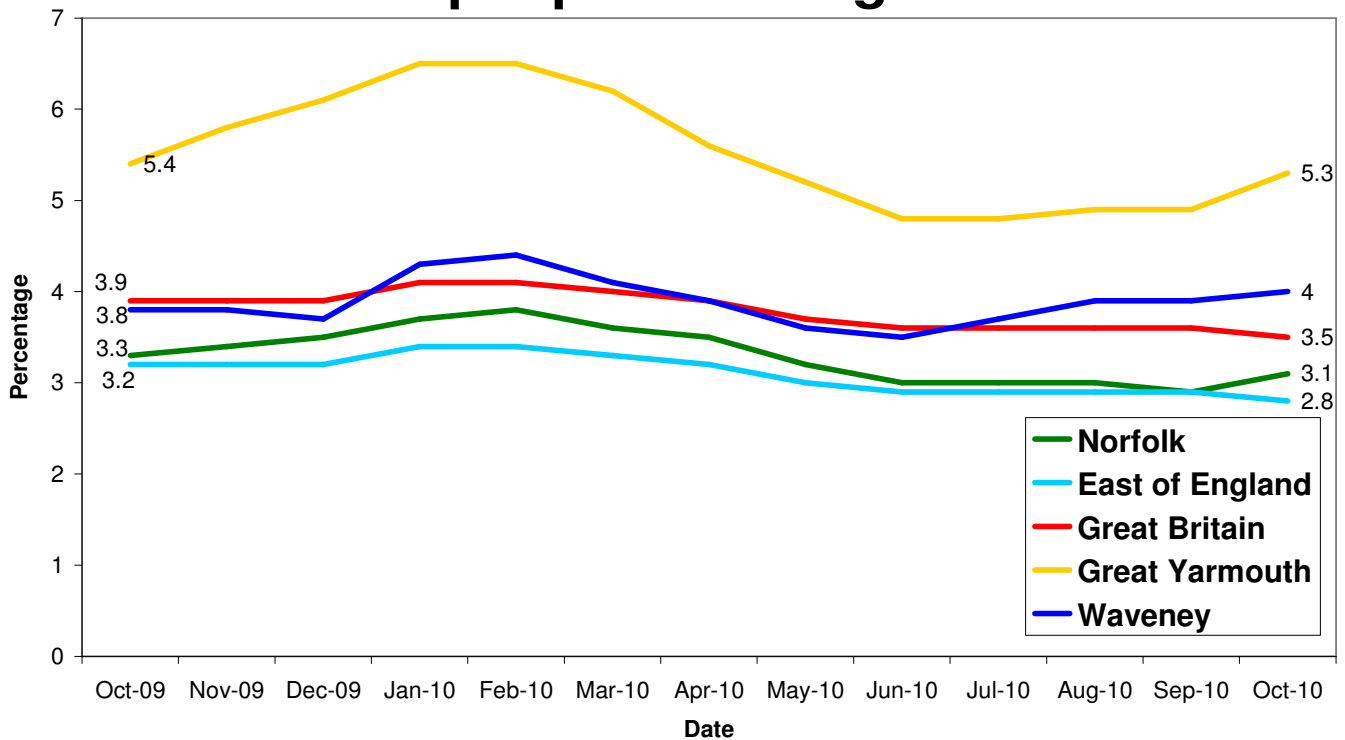
The Port of Great Yarmouth has announced the suspension of its container operation, with the £30m terminals £7m cranes set for removal.

Unemployment

Key Facts

- Norfolk JSA claimant count was 16,195 in October, up 583 or 3.6% since September 2010 but down by 1,453 on the year, an 8.2% increase since October 2009.
- Great Yarmouth JSA claimant count was 3,165 in October, up 222 or 7.5% since September 2010 but down by 59 on the year, a 1.8% decrease since October 2009.
- Waveney JSA claimant count was 2,844 in October, up 66 or 2.4% since September 2010 and up by 149 on the year, a 5.5% increase since October 2009.

All people claiming JSA



Source: Job Centre Plus

| Area | Count | %age of working age population | Change in count year on year | %age change in count year on year |
|----------------|-------|--------------------------------|------------------------------|-----------------------------------|
| Great Yarmouth | 3,165 | 5.3 | -59 | -1.8 |
| Waveney | 2,844 | 4.0 | 149 | 5.5 |

Source: Job Centre Plus

Redundancies

Key Facts

There have been 683 redundancies notified to Norfolk Job Centre Plus between July 2008 and 31 October 2010 for Great Yarmouth. This now accounts for seven and a half percent of the total notified to Norfolk Job Centre Plus. An increase of 1 and a half percent since September.

Source: Job Centre Plus

Job Adverts (EDP)

| Date | Pages | Public Sector Jobs (council, education, NHS, healthcare) | Private Sector Jobs | Third Sector Jobs |
|-------------------------------|---|---|---------------------|-------------------|
| 7 th October 2010 | 4 (+ double spread on interview techniques) | 41 (30.83) | 83 (62.41%) | 9 (6.77%) |
| 14 th October 2010 | 4 | 49 (40.83%) (Broadland have put out an advert asking for interest from boiler/heating installers to take part in the Rackheath Eco retrofitting project) | 53 (44.17%) | 18 (15%) |
| 21 st October 2010 | 5 | 43 (35%) | 71 (57.72%) | 9 (7.32%) |
| 28 th October 2010 | 3 | 26 (35.14%) | 39 (52.70%) | 9 (12.16%) |

Unless figure or positions stated each advert is counted as one position

Job Adverts (Yarmouth Mercury)

| Date | Pages | Public Sector Jobs (council, education, NHS, healthcare) | Private Sector Jobs | Third Sector Jobs |
|-------------------------------|-------|--|---------------------|-------------------|
| 1 st October 2010 | 1/2 | 3 (60%) | 2 (40%) | 0 |
| 8 th October 2010 | 1/2 | 0 | 9 (90%) | 1 (10%) |
| 15 th October 2010 | 1 | 2 (11.76%) | 15 (88.24%) | 0 |
| 22 nd October 2010 | 3/4 | 4 (26.67%) | 10 (66.67%) | 1 (6.67%) |
| 29 th October 2010 | 3/4 | 1 (14.29%) | 5 (71.43%) | 1 (14.29%) |

Job Adverts (Lowestoft Journal)

| Date | Pages | Public Sector Jobs (council, education, NHS, healthcare) | Private Sector Jobs | Third Sector Jobs |
|-------------------------------|---------|--|---------------------|-------------------|
| 1 st October 2010 | No data | | | |
| 8 th October 2010 | 1 | 5 (35.71%) | 9 (64.29%) | |
| 15 th October 2010 | No data | | | |
| 22 nd October 2010 | 3/4 | 4 (30.77%) | 8 (61.54%) | 1 (7.69%) |
| 29 th October 2010 | 1 | 4 (50%) | 3 (37.5%) | 1 (12.5%) |

5,371 jobs in Norfolk were notified to Job Centre Plus. Of these 67 percent were full time positions. Notified vacancies were up 6.9 percent from August's total.

- Great Yarmouth had 363, an increase of 15 percent since last year but a decrease of 17 percent from August.

4,850 jobs in Suffolk were notified to Job Centre Plus. Notified vacancies were up 19.3 percent from August's total.

- Lowestoft had 337 (of these 67.4 percent were full time positions), an increase of 6.1 percent since last year but a 4.8 percent decrease from August.

Data is from August as September's data is not available.

Norfolk JCP Figures

| Industry | Norfolk | |
|--|------------|------------|
| | October 09 | October 10 |
| Agriculture, hunting and forestry | 55 | 26 |
| Manufacturing | 89 | 139 |
| Electricity, gas and water supply | 22 | 60 |
| Construction | 156 | 108 |
| Wholesale and retail trade | 605 | 966 |
| Hotels and restaurants | 316 | 280 |
| Transport, storage and communication | 208 | 277 |
| Financial intermediation | 70 | 92 |
| Real estate, renting and business activities | 1,499 | 2,236 |
| Public administration/defence/compulsory social security | 125 | 255 |
| Education | 67 | 72 |
| Health and social work | 557 | 383 |
| Other community, social and personal service activities | 124 | 462 |
| Column Total | 3,893 | 5,356 |

 Industry sectors with falls in job vacancies

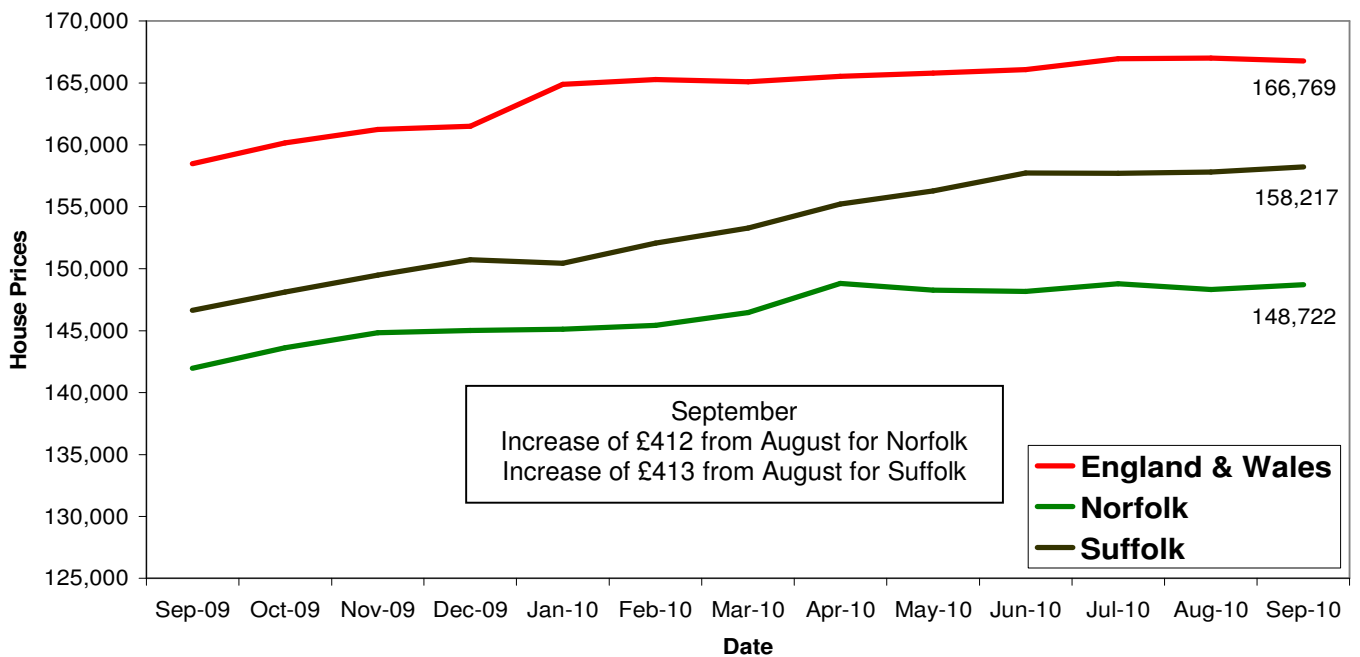
Housing

Key Facts

- UK house prices increased by 1.8% in October.** Prices in the three months to October were 1.2% lower than in the preceding three months. This measure gives a better indication of the underlying trend in house prices than the monthly changes.
- Average House price £164, 919**

Source: Halifax House Price Index

House Price Trends



Source: Land Registry