

## Great Yarmouth and Waveney Quarter 2: July-September 2009



## Content

Introduction	3
Summary	3
Conclusion	3
Trading Climate & Confidence Levels	4
Investment Enquiries	6
Insolvencies	7
Surveys & Research	8
Support & Government Initiatives	13
Business Link Engagement	15
Unemployment	16
Redundancies	18
Job Adverts (EDP)	20
Job Vacancies	20
Skills	20
Housing	21

Intelligence in these reports has been gathered from a number of sources which include:

- nomis official labour market statistics
- Job Centre Plus – Norfolk and Suffolk
- Land Registry house prices
- Halifax house price index
- Bidwells data books
- McTear, Williams & Wood
- the EDP newspaper
- the Lynn News paper
- the Lowestoft Journal
- the Great Yarmouth Mercury
- email updates from businesses
- word of mouth
- sector group meetings

## Introduction

This document brings together key business and economic intelligence information over the past quarter to develop a clearer understanding of the economic performance of the Great Yarmouth and Waveney sub-region.

## Summary

The quarter has seen largely positive data and business news for the Great Yarmouth and Waveney sub-region, suggesting the sub-region has weathered the downturn better than other parts of the region.

Key employment sectors of energy, engineering, tourism and food processing have all seen positive news announcements in this quarter.

Tourism in particular has enjoyed a successful summer, plus plans for a number of new tourism developments creating more than 400 jobs in total. A number of energy sector businesses have announce new contracts, some after the Offshore Energy Exhibition in Aberdeen. And in food processing, key employer Pasta Foods in Great Yarmouth returned to the black and drinks business Adnams in Southwold saw an increase in profits. The positive impact of the new Outer Harbour in Great Yarmouth can be seen with a £5m new grain terminal.

Despite the positive news, unemployment in Great Yarmouth increased slightly over the quarter – in contrast to a fall in Norfolk as a whole. In Waveney unemployment fell slightly. Increases in unemployment are expected in the next quarter.

Insolvency figures have reduced from the previous quarter, but remain high. Business confidence has risen, according to the latest Chamber of Commerce survey.

The September Chartered Institute of Purchasing and Supply (CIPS) showed service businesses looking more positive, whilst research from the CBI found manufacturers remain gloomy.

Public sector interventions are starting to have an impact – such as the Government's Future Jobs fund, although there are concerns about how the squeeze in public sector finances will impact on the sub-regional economy.

## Conclusion

Both economic data and business intelligence are showing that Great Yarmouth and Waveney are out-performing other parts of the region.

There are now more positive trends than in the first quarter report, which itself was an improvement on the sea of negative data between September 08 and March 09.

However there is uncertainty about whether the economic recovery will be maintained, although interestingly many surveys are now indicating optimism for the future.

## Trading Climate & Confidence Levels

### **Key Facts**

The sub-region has seen a raft of positive news announcements – suggesting the trading climate and business confidence levels are significantly improved on the previous quarter. Most of the key sectors had positive announcements, including energy and engineering.

### **Agriculture & Food Processing**

The agriculture and food processing sector has seen a positive quarter in Great Yarmouth and Waveney with Pasta Foods returning to profit after a £500,000 turnaround in fortunes and Adnams seeing an increase in profits of £591,000 after tax in the first six months of 2009, following a £114,000 loss in the same period of 2008. The area is also seeing an investment by Gleadell – agricultural merchants – who are spending £5m on a new grain terminal and loading facilities for vessels of up to 25,000 tonnes at the Great Yarmouth Outer Harbour. Construction will start in October or November and should be up and running by the beginning of next July.

### **Construction**

P J Groundworks Eastern Ltd has been bucking the trend by building a new office and yard and creating more jobs as they hope to expand quite dramatically.

### **Energy**

The energy sector has experienced success with new contracts, investment and attendance at exhibitions. Cosalt Offshore, an oil and gas industry supplier will create 12 new jobs after winning a £25m contract with energy giant BP across its North Sea operations and Fern Communications, Lowestoft – offshore communications company to the oil and gas industry – will be expanding its market in Scandinavia by working with Norwegian company West Communication AS to promote the FRX-1 radio repeater. Enviroserve, which services windfarms around Britain, has launched a new £1m catamaran. The company was set up by a former fisherman due to the struggle to make a living with EU quotas squeezing profits.

Top industry names from across the world descended on the Offshore Europe oil and gas exhibition in Aberdeen this week - and joining them were more than 20 companies from Lowestoft and Great Yarmouth. At the Great Yarmouth and Lowestoft East of England stand there were also new local businesses showcasing their services for the first time.

## **Engineering**

Gardline in Great Yarmouth, a marine contractor with a turnover of £140m has acquired Howards – the estate agency, property consultancy and its MMBL chartered surveying operation diversifying the successful company.

C-MAC Microtechnology, Great Yarmouth – an electronics firm which employs 250 people – is set to expand its presence in the space sector in a pioneering deal with US corporation Linear Technology through supplying modules designed to withstand radiation in space.

## **ICT**

EACS in Lowestoft – print management company – has had a successful quarter with the launch of a new patented product to improve the way companies send out gifts ordered by customers on the internet. The new Integrated Gift Tag will improve the efficiency with which goods are sent out and it has already landed deals with household names such as Estee Lauder and Thorntons chocolates.

## **Tourism**

This quarter has seen two major investment plans revealed: Southwold Pier - the proposals - which will cost in the region of £4m - include demolishing the existing pavilion building and creating a new five storey structure that will feature a 34-bedroom, four-star luxury hotel. There are also plans to improve the existing amusement arcade, re-model the kitchen, extend the café, create a new bar and replace the Beachcomber Bar with a multi function room to be used by members of the community and plans for the multi-million pound investment of the Pontin's Pakefield Holiday Centre. This plan could create around 350 jobs and the newly created Lowestoft (Pakefield) Holiday Park will - subject to planning approval – double in capacity and extend over 100 acres.

In addition Breydon Water Holiday Park, Burgh Castle near Great Yarmouth, has submitted plans to replace 89 touring spaces with 38 static caravan patches which would create more jobs.

In terms of business, a snap survey of clients by the Great Yarmouth office of accountants and business advisers, PKF, found that many in the tourist and retail business had enjoyed as good a summer season as last year, if not better. It is believed that holiday makers who opted to stay in the UK rather than travel abroad have helped save the leisure business in Norfolk's biggest resort from the worst ravages of the recession.

## **Other**

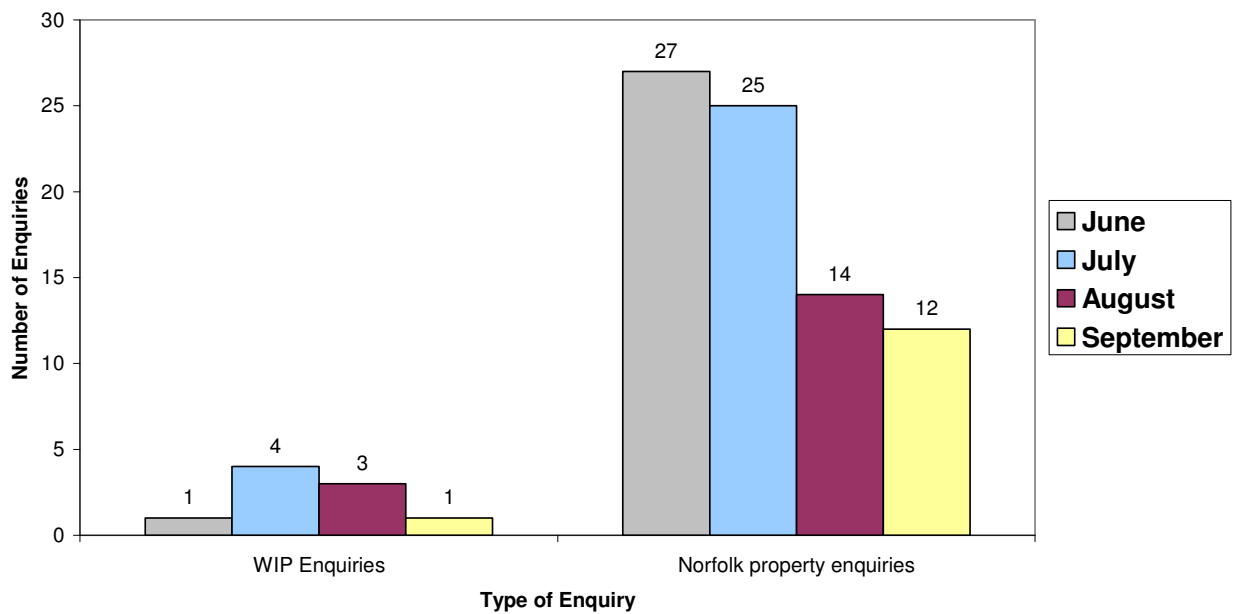
On the whole retail has been positive this quarter with Wilkinsons, Lowestoft and Outfit, Great Yarmouth opening up in former Somerfield and MFI stores respectively creating around 100 new jobs between them. However, Allied Carpets in Great Yarmouth did close after the business went into administration. In addition King of Shaves, founded in Lowestoft – razors, shaving and skincare producer has raised in excess of £900,000 through more than 300 people investing in savings bonds, an average of £3,000 each.

## Investment Enquiries

### Key Facts

The table shows that there are a higher proportion of Norfolk property enquiries through the Invest in Norfolk website than there are foreign company property investment enquiries. Norfolk property enquiries have declined over the quarter by 52%, and WIP enquiries have declined by 75% but the numbers are small which inflate the percentage fall.

## Investment Enquiries



WIP Enquiries – foreign company property investment enquiries

Norfolk property enquiries – enquiries via [www.investinnorfolk.com](http://www.investinnorfolk.com)

## Insolvencies

### Key Facts

- **Norfolk has seen insolvencies drop by 25% between Quarter 1 and 2 in 2009. Norfolk has double the number of insolvencies in Quarter 2 2009 as Quarter 2 2008.**
- **Suffolk has seen insolvencies drop by 32.35% since Quarter 1, but there have been 43.75% more in Quarter 2 2009 than Quarter 2 2008.**

**Norfolk is still the hardest hit county but the drop in figures for both Norfolk and Suffolk may show that the worse of the recession is over in these counties.**

2008	Norfolk	Suffolk	Cambs	Essex	Total
Qtr 1	18	22	15	18	73
Qtr 2	15	16	14	18	63
Qtr 4	28	21	29	21	99
2009					
Qtr 1	40	34	22	33	129
Qtr 2	30	23	26	17	96

The mw-w.com index has risen from 263 in quarter one 2009 to 273 for Norfolk.

*Source: McTear, Williams & Wood*

## Surveys

### Key Facts

Surveys carried out during this quarter show that business confidence and optimism is growing in the majority of sectors, although manufacturing remains negative. Graduates are suffering with a quarter not in full time work three and a half years after graduating and those coming up to retirement are having to reconsider their options.

British Chamber of Commerce - Quarter 2 (April-June) Survey. Findings include:

- The worst of the recession is over.
- Turnover confidence has entered positive territory for the first time since Q3 last year and it has improved dramatically for manufacturing firms, rising 40 points from -38 in Q1 to +2 in Q2.

Norfolk analysis of the Quarter 2 Survey can be seen in the table:

### Norfolk results:

#### Quarterly Economic Survey

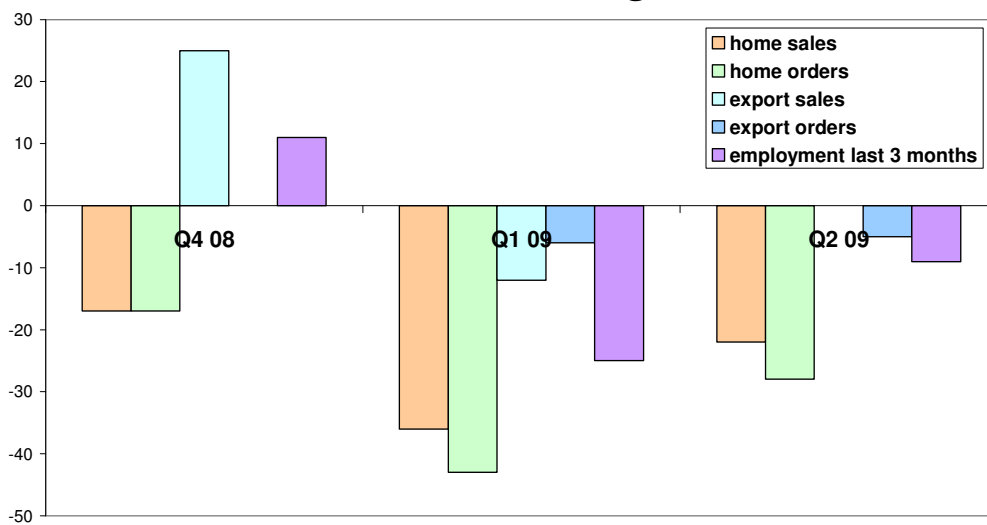
		Manufacturing			Service		
		Q4-08	Q1-09	Q2-09	Q4-08	Q1-09	Q2-09
Excluding season variations during the past 3 months what increase has there been in:	Home sales	-17	-36	-22	-14	-14	-6
	Home orders	-17	-43	-28	-24	-26	-14
	Export sales	25	-12	0	3	24	-10
	Export orders	0	-6	-5	-6	-9	-7
	Employment last 3 months	11	-25	-9	0	-16	-9
Over the next 3 months do you expect your workforce to increase	Employment next 3 months	-11	28	6	-8	-1	3
Have you tried to recruit staff over past 3 months	% Tried to recruit	59	41	41	48	45	47
If yes were they for:	% Part-time	25	40	17	35	40	37
	% Full-time	72	60	83	65	60	63
	% Temporary	70	63	25	35	35	36
	% Permanent	30	38	75	65	65	64
Did you experience any difficulties finding suitable staff?	% Recruitment difficults	25	38	69	75	62	57
	% Skilled manual	50	31	15	23	22	17
	% Professional & Managerial	13	15	46	42	27	31
	% Clerical	13	0	8	26	18	13
During the past 3 months have you seen an increase in:	% Semi & unskilled	13	0	23	11	5	10
	Cashflow	-3	-40	-38	-24	-29	-21
	Investment - plant and machinery	15	-10	-32	-16	-11	-16
	Investment - training	22	-12	-16	-1	-4	2
During the next 12 months which of the following do you expect ot	Confidence - turnover	-19	-35	-3	-1	-10	22
	Confidence - profitability	-19	-53	-31	-21	-21	2
Are you currently operating at full capacity	% Full capacity	48	27	22	31	30	41
Over the next 3 months do you expect your prices to increase	Prices	18	3	-13	19	3	7
Is your business suffering pressure to raise prices from any of the following:	% Pay settlements	26	22	6	18	7	13
	% Raw Material	67	66	50	25	25	22
	% Financial costs	15	44	28	19	19	17
	% Other overheads	44	63	34	43	37	31

Questions 1 and 7 have been looked at in more detail as we felt these two questions were the most important in terms of the impact of the recession.

Question 1: excluding season variations during the past three months what increase has there been in:  
home sales; home orders; export sales; export orders; employment

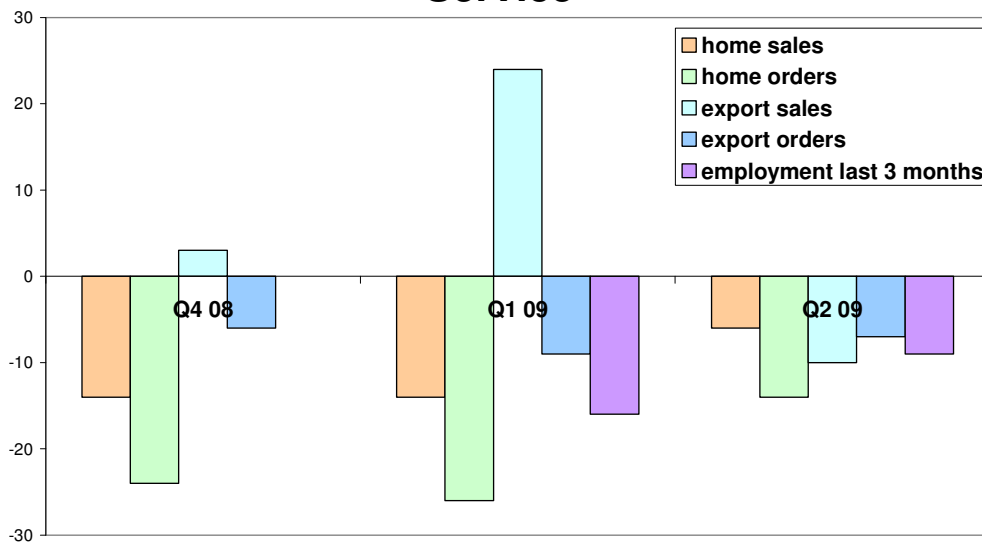
Manufacturing industries have seen an increase in homes sales, home orders and export sales between Q1 and Q2 after falling after Q4 08. Export orders remained stable after a slight fall from Q4 08. Employment fell dramatically between Q4 08 and Q1 09, but has started to increase in Q2.

### Manufacturing



Service industries have seen a continued increase in home sales since Q4 08, although they are still negative. Export sales peaked in Q1 09 but have fallen in Q2 09 to values below Q4 08.

### Service

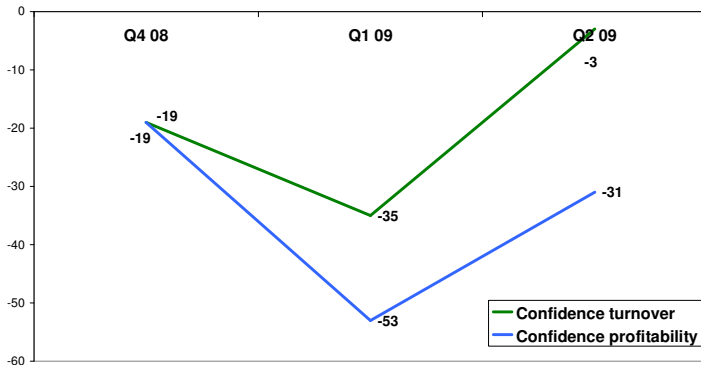


Question 7: during the next 12 months which of the following do you expect:

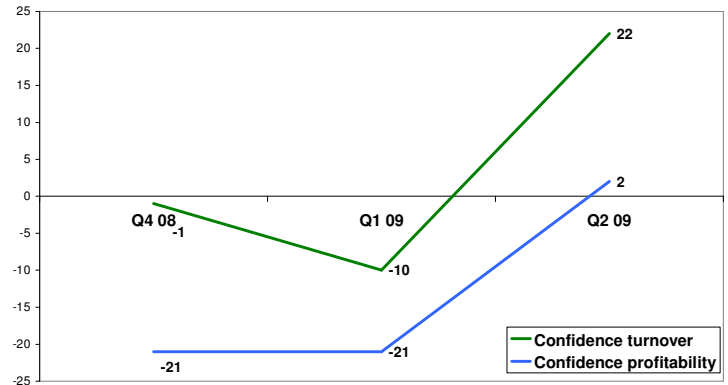
The manufacturing industries have remained negative, although confidence in turnover and profitability has increased between Q1 and Q2 09.

The service industries have broken into positive figures, with confidence in turnover increasing 32 points.

**Manufacturing**



**Service**



British Chamber of Commerce - Quarter 3 (July-September) Survey. Findings include:

- Business confidence in Norfolk has strengthened across the board, particularly in the service industry, where turnover confidence climbed seven points to +41 percent. It remained steady in the manufacturing sector.
- Employment expectation in the services sector has risen by four points on the previous quarter to reach +6 percent.
- Less optimistically, cashflow expectations remain negative and are still weak by historical standards
- While domestic orders and sales improved during the third quarter, particularly in the service sector, they remain negative.

The Norfolk breakdown is not yet available.

## Further Surveys

August - Parity, IT company – impacts of the recession and job cuts. Findings include:

- recession induced job cuts could threaten efficiency, productivity and profit in the long-term
- almost a quarter of companies are unable to access information held by employees after they have been made redundant
- three fifths of firms have reduced staff hours
- 40 percent of firms have cut down on face-to-face meetings

August - NHBC survey of small buildings. Findings include:

- 41 percent believe they will feel the positive effects of a market recovery within a year

- 18 percent say it will take just six months for them to notice the benefits of a market recovery
- 12 percent said they are hopeful of benefiting from an upturn within two years.

August- Engineering Employers Federation survey. Findings include:

- More than three out of four manufacturing firms are freezing pay, with little sign that the trend will change soon
- Average deals have slumped from 0.8 percent to 0.3 percent in recent months, the lowest since records began in 1987.

August - Institute of Chartered Accountants in England and Wales. Findings include:

- Optimism among professionals is at its highest for two years, jumping from minus 28.2 in the third quarter to 4.8, the largest quarterly improvement since the survey began in 2003.
- Based on results of its Business Confidence Monitor it now predicts that economic output will rise 0.5 percent this quarter. Its forecast comes after a worse-than-expected 0.8 percent decline in the economy between April and June, marking the UK's fifth successive quarter of recession.
- Businesses expected a rise in 13 out of the survey's 14 key financial performance indicators in the coming 12 months, in contrast to earlier in the year when most were expected to contract.

August - Opinion Matters questioned 2, 053 people on behalf of MGM Advantage, retirement income firm. Findings include:

- A third of people have been forced to delay their retirement after seeing the value of their pension fund slashed during the economic downturn.
- Around 35 percent of people aged over 55 who are still working said they had put off plans to retire while they waited for the value of their pension savings to recover.
- 23 percent are expected to work on beyond the state pension age of 65
- 32 percent admitted they were not at all prepared for retirement.
- 48 percent said the recession had not changed their retirement plans
- 13 percent said they were currently saving more to offset losses elsewhere
- One in ten people said they were planning to boost their retirement income by either releasing equity from their home or moving to a smaller property.

August - Experian, global information services company research into used car sales. Findings include:

- 82, 767 used cars were sold in East Anglia from April 1st to June 30th 2009, almost 6 percent lower than the same period last year.
- Nationally used car sales were down 6.6 percent to about 1.8m.

August – Barclays survey of 3000 small companies 'Have Your Say'. Findings include:

- 49 percent were planning to grow in the next 12 months
- 34 percent expecting to stay the same or consolidate

- 54 percent of retail sector companies planning an expansion
- 46 percent of trade sector companies planning an expansion
- 60 percent of businesses less than three years old are considering expansion
- 40 percent of businesses more than 11 year sold are considering expansion

September – Charity Commission’s third economic survey. Findings include:

- Norfolk charities are remaining positive about the future, despite the survey showing an increase in the number of good causes being affected by the recession.
- 56 percent had been affected by the downturn, up from 52 percent at the beginning of the year.
- 71 percent of charities felt optimistic about the outlook for the next six months.
- 9 percent of charities had considered merging, collaborating or forming a consortium with another charity
- 21 percent had looked to cut office and energy costs
- 18 percent had increased their fundraising efforts
- Largest charities, with an annual income of £1m or more, were both the most affected (83percent) and the least optimistic group, with one in three being worried about the future.

Norwich and Norfolk Scope Association is managing to buck economic trend. Its six shops in and around Norwich have trebled their profits over the past year to about £90,000.

September – CBI trends survey with 555 firms responding. Findings include:

- Manufacturers reported depressed order books for the 15<sup>th</sup> month in a row
- 48 percent of firms said order books were below normal
- 2 percent expecting output to fall over the next three months – strongest result since June last year
- 46 percent said export levels were lower than expected, little changed on the month
- Manufacturers expect little change in domestic prices in the three months ahead, easing concerns over a possible slide in deflation.

September – Higher Education Statistics Agency surveyed a snapshot of 41,395 university leavers graduates on November 28 last year. Findings include:

- Almost a quarter of graduates were still not in full-time work three and a half years after leaving university
- 19 percent of those working full or part-time were not in graduate professions
- 11.7 percent of those who left university in 2005/05 said they had been out of work at least once
- 23.0 percent were not in full time paid work

A study by academics at the University of East Anglia has found that employers valued a candidate’s “values, social engagement and intellect” as traditional skills. The finding is the result of research with 105 employers of different sizes and from different industries in East Anglia.

September – Chartered Institute of Purchasing and Supply's (CIPS) report. Findings include:

- Services sector – the biggest contributor to the economy – recorded a reading of 54.1 on the business activity index, this is up from 53.2 seen in July and marks the highest on the CIPS purchasing managers' index since September 2007.
- August was the fourth month in a row where the reading has been above 50, which indicates growth.

September – Aon Consulting regarding retirement. Findings include:

- 64 percent of workers think they will have to delay their retirement plans because of the recession.
- 19 percent of workers are expecting to have to work for an extra six to nine years.

## Government Initiatives

### Key Facts

**The schemes and support released during this period have included programmes and funding to help businesses to save money through resource and energy efficiency, as well as providing businesses with money to take on new staff- young people and those made redundant. This quarter has also seen the return of innovation vouchers after their previous success, demonstrating the support for people to get ahead during the downturn.**

### Initiatives Released/Promoted:

'Rural Money Matters' document was launched on July 1<sup>st</sup>. The document is intended to be a support guide to help people, local authorities and community groups find ways of bringing people out of financial problems.

A £2.3m government grant is to create 356 job placements to help get young people in Norfolk into full-time work. Six-month, fully subsidised placements for 18-24 year olds will be available through Job Centre Plus from October.

The jobs will run at the minimum wage for 25 hours a week, which the council said would offer job seekers valuable work experience and a regular income. To be eligible, applicants must have claimed Jobseekers' Allowance for between six months and a year. Jobs will be available in "green" industries, construction, retail, mechanics, clerical, gardening, plastering, painting and decorating.

5<sup>th</sup> August - Resource Efficiency East – launched a £2.1m programme to help regional businesses use resources more efficiently while boosting their profits. Two day supportive package including an onsite visit from a consultant, written report and tailor made action plan for businesses with fewer than 250 staff and turnover of less than Euro50m (about £42m) is one of the available services.

[www.resourceefficiencyeast.co.uk](http://www.resourceefficiencyeast.co.uk)

19<sup>th</sup> August – Construction Skills, the industry's sector skills council has received £1m funding from the National Apprenticeship Service for construction businesses in the east of England to help them take on apprentices laid-off during the recession. Companies that are able to provide suitable apprenticeship employment to out of work apprentices and support them to complete their training can apply for financial support of up to £1,000. Funding is available for people in the final 12 months of their apprenticeships.

21<sup>st</sup> August – Carbon Trust - £100m in interest-free and unsecured loans for small and medium businesses over the next two years. British Chamber of Commerce urging businesses to take these loans up to help more businesses survive the recession by cutting their energy costs and their carbon footprints. Minimum loan amount has been lowered to just £3000 with an upper limit of £400,000.

28<sup>th</sup> August – Small Loans for Business scheme – programme through East of England Development Agency (EEDA) for businesses looking to borrow between £500 and £200,000. The scheme offers between £500 and £50,000 to regional businesses whose funding applications have been refused by the banks, while Regional Growth Loans provide up to £200,000 for small to medium-size businesses that demonstrate potential for long-term growth and a workable business proposition.

[www.eeda.org.uk/finance](http://www.eeda.org.uk/finance)

25<sup>th</sup> September – Innovation Vouchers initiative – provides small to medium sized enterprises with £3,000 worth of dedicated support and advice through one week's close collaboration with top academics and researchers – free of charge.

The Future Jobs Fund is a £1 billion national fund aimed at creating 150,000 jobs between October 2009 and April 2011 providing real help for young people (18 – 24 years) and those who face significant disadvantages in the labour market. On behalf of Norfolk County Strategic Partnership, Norfolk County Council has led a bid to the Fund, with responsibility for the scheme delegated to the Investing in Communities (IiC) Partnership Board. The County Council will be the 'lead' delivery partner with a wide range of other partners, and have secured £1.2 million to date, with a potential to take this up to £2.3 million early next year. The first stage of the project will secure 183 jobs as well as providing intensive support to individuals to ensure they are able to progress into further employment beyond the period of funding.

The jobs created will be based mostly within social enterprises and will be within the following sectors: green construction, clerical, gardening, plastering and painting and decorating. A second bid will be developed that will focus on Lone Parents in areas of high unemployment, in addition to continuation of the 18-24 yr project. The focus on Lone Parents is proposed as the work of the Child Poverty Action Group identified them as the largest group in Norfolk where Children are in Poverty.

## Business Link Engagement

### Key Facts

**Business Link has engaged with 732 businesses in Great Yarmouth during this second quarter, a fall of 26 (3.4%). 567 were enquiries from people considering starting a new business, the highest figure in the district, an increase of 219 (62.9%). This increase may be due to more positive news stories in the region encouraging entrepreneurial people to consider starting a new business.**

### KEY

**IDBR** Inter-Departmental Business Register. Based on inputs from three administrative sources:

1. traders registered for Value Added Tax (VAT) purposes with HM Customs and Excise;
2. employers operating a Pay As You Earn (PAYE) scheme registered with the Inland Revenue; and
3. incorporated businesses

This represents the "stock" of businesses in the county (including the unitaries)

- A** Start Up Activity expressed as a % of IDBR  
**B** Established businesses expressed as a % of IDBR  
**C** All customers expressed as % of IDBR

Area	IDBR	Pre-Start	Start Up	A %	Established Businesses	B %	Total	C %	Intensive Assisted Customers
<b>Great Yarmouth</b>	<b>3,025</b>	<b>567</b>	<b>24</b>	<b>0.8</b>	<b>141</b>	<b>4.7</b>	<b>732</b>	<b>24.2</b>	<b>22</b>
Breckland	5,045	106	23	0.5	218	4.3	347	6.9	39
Broadland	4,595	82	13	0.3	186	4	281	6.1	34
King's Lynn & West Norfolk	5,410	111	15	0.3	209	3.9	335	6.2	37
Norwich	4,235	138	24	0.6	264	6.2	426	10.1	47
North Norfolk	4,485	188	7	0.2	169	3.8	364	8.1	37
South Norfolk	5,280	81	15	0.3	214	4.1	310	5.9	53
<b>TOTAL</b>	<b>32,075</b>	<b>1,273</b>	<b>121</b>	<b>0.4</b>	<b>1401</b>	<b>4.4</b>	<b>2,795</b>	<b>8.7</b>	<b>269</b>

Source: Business Link East

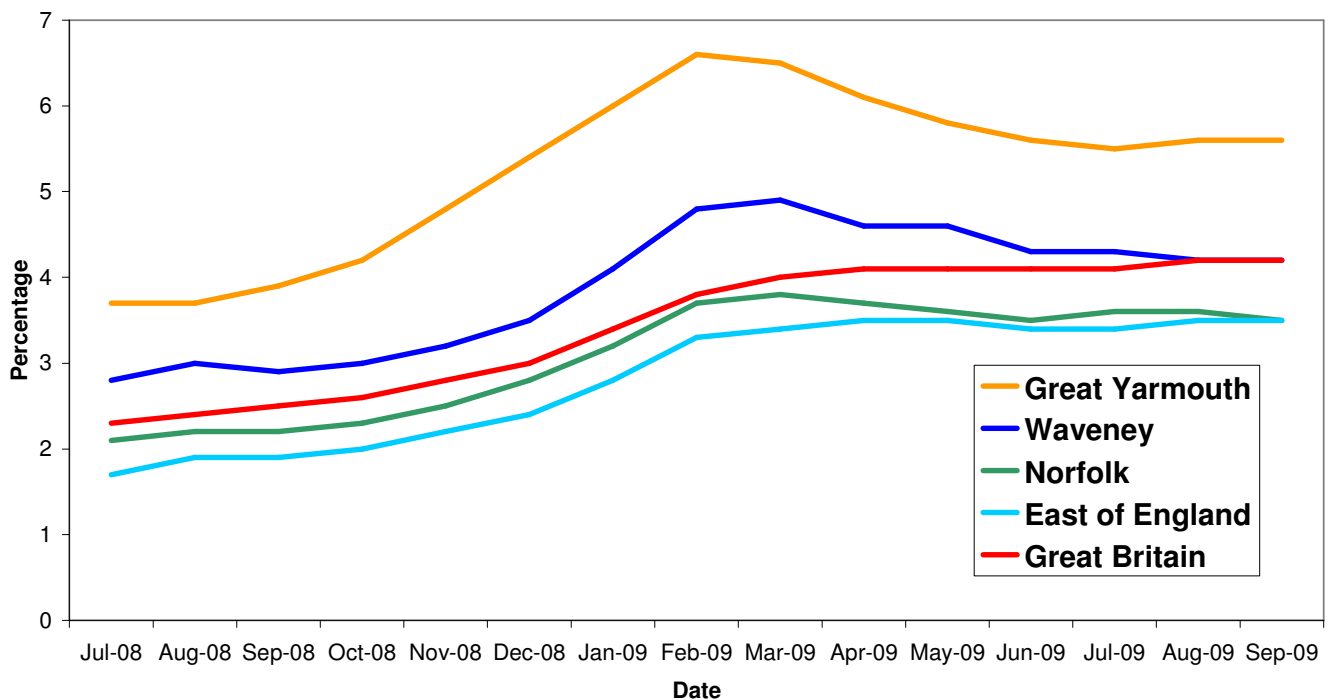
## Unemployment

### Key Facts

- **Norfolk saw an average of 17,604 people claiming JSA in this second quarter, with a fall of 158 people, 0.9% between July and September but a peak of 17,856 in August.**
- **Great Yarmouth saw an average of 3035 people claiming JSA in this second quarter, with an increase of 32 people, 1.06% between July and September.**
- **Waveney saw an average of 2787 people claiming JSA in this second quarter, with a fall of 67 people, 2.37% between July and September.**

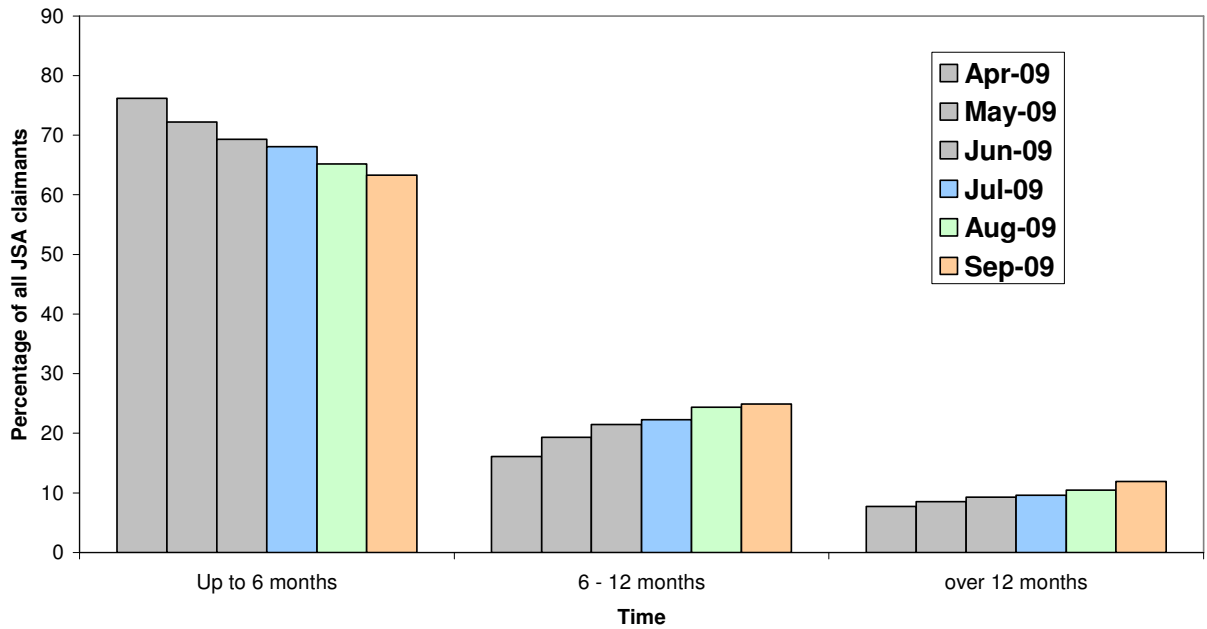
Unemployment in the region has hit 200,000 following a 10 percent jump in three months. Figures from the Office for National Statistics (ONS) for May to July published on the 16<sup>th</sup> September showed a 20,000 increase on the previous three months, bringing the rate to 6.7 percent. The figure is more than a third higher than in May to July 2008.

## All people claiming JSA



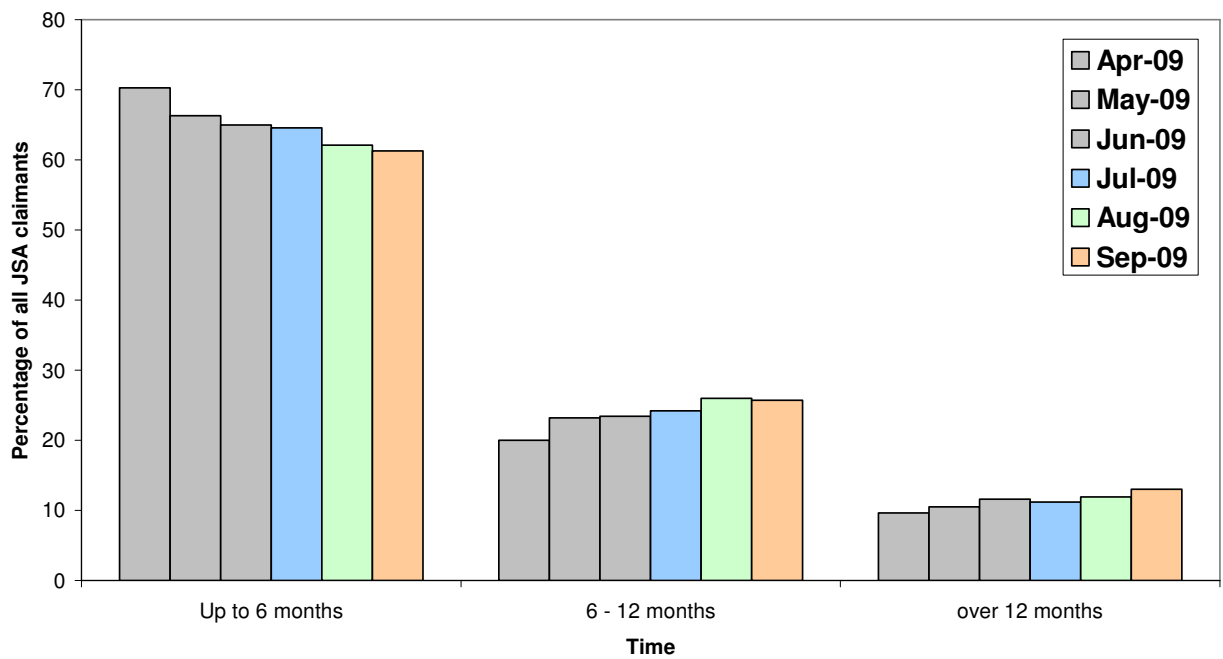
Source: Nomis

## Norfolk JSA Claimants by Duration

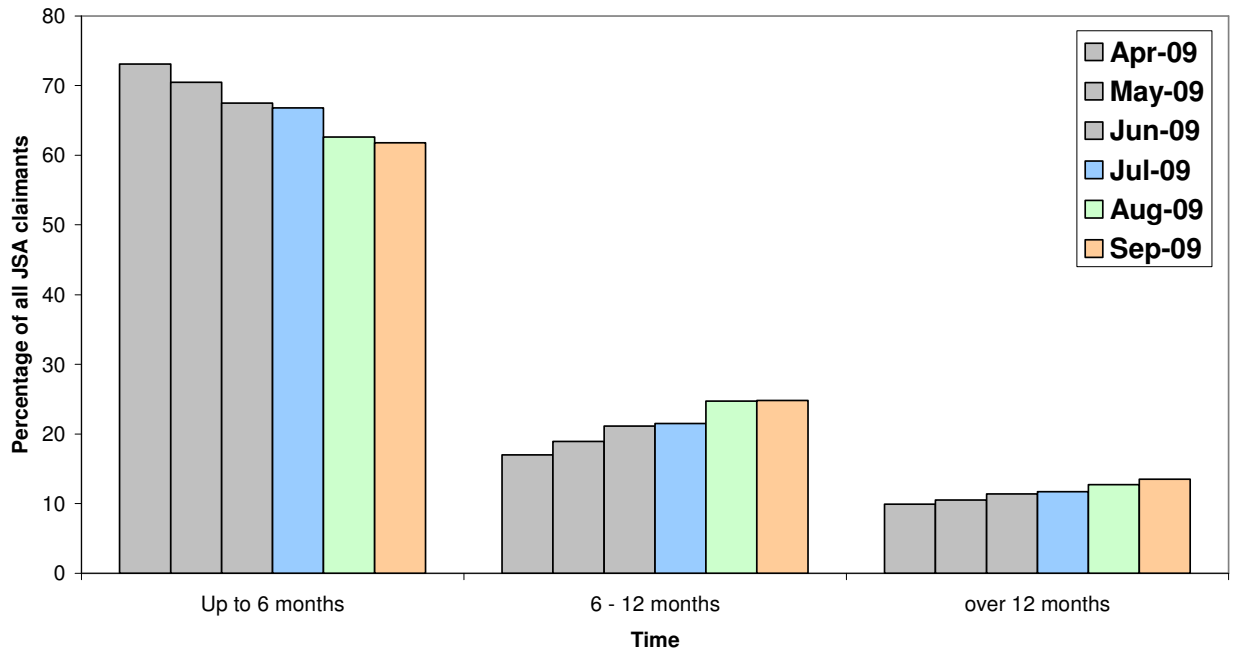


Source: Nomis

## Great Yarmouth JSA Claimants by Duration



## Waveney JSA Claimants by Duration



## Redundancies

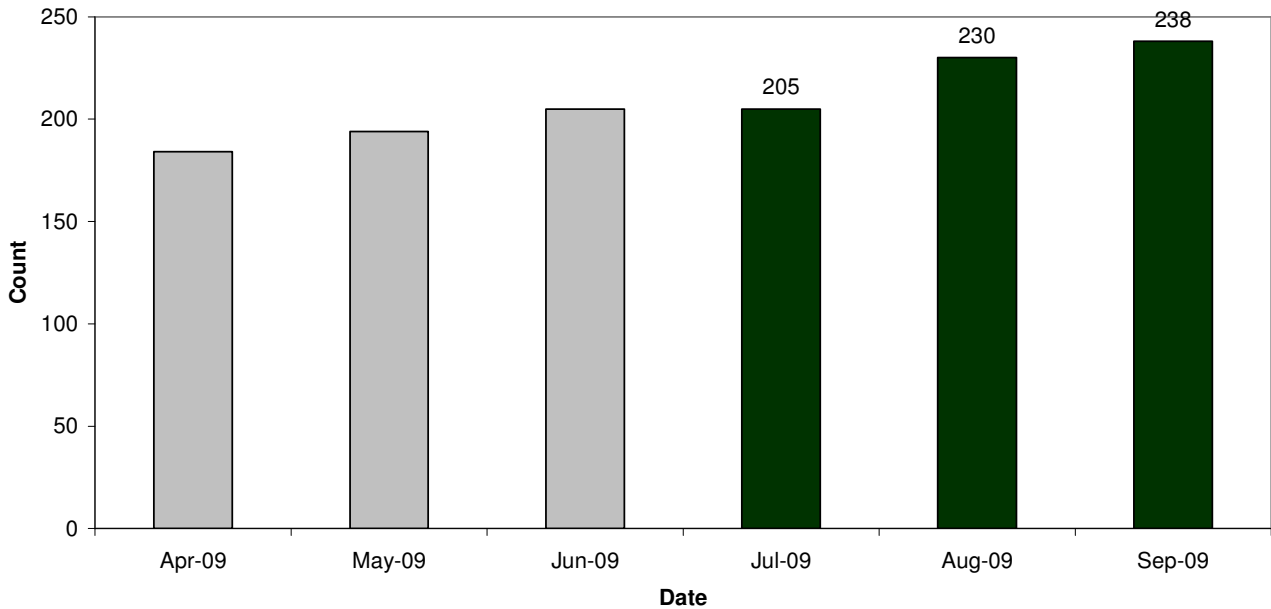
### Key Facts

**Redundancies in Great Yarmouth have increased during this quarter at the same pace as in the last quarter, with a 23 rise of notifications, 11.22%. For each month Great Yarmouth's redundancy figures have accounted for 4% of the total notified to Norfolk Job Centre Plus.**

Month	Number of Redundancies
July	205
August	230
September	238

Source: Job Centre Plus

## Great Yarmouth redundancy notifications - running total



Total Redundancies in Norfolk since July 2008	Sector
5,661	All
955	Manufacturing
811	Construction
998	Insurance & Financial Services
711	Retail
491	Haulage & distribution
384	Food Processing
212	Tourism & Leisure
222	Publishing
139	Public Transport
101	Boat building
96	Media
133	Mechanical/electrical engineering
69	Further Education
64	Service
67	Health & Social Care
44	Wholesale
42	Real Estate
41	Printing
40	Science / Research
18	Architecture
15	Public service

## Job Adverts (EDP)

### Key Facts

**From the available data for this quarter there are an increasing number of private sector jobs, although public sector typically had more positions overall.**

**The Yarmouth Mercury and Lowestoft Journal have fewer job notifications than the EDP- typically only one or two pages but reflect the trend towards more private sector jobs.**

**Part of the rise in private sector jobs have been for large numbers of temporary workers for the Christmas period.**

Vacancies notified to JCP		
	Number	Monthly Change %
July	293	-37.92
August	350	19.45
September	399	14

## Skills

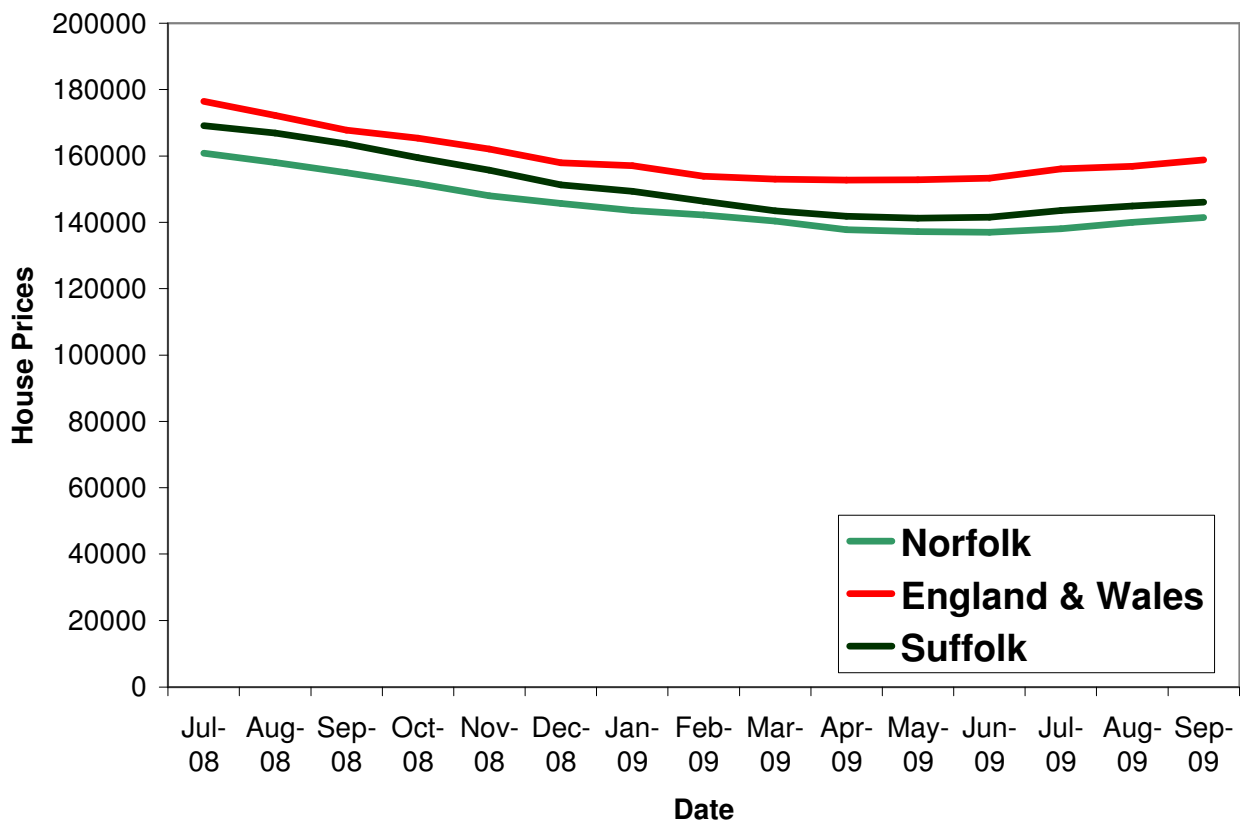
In the National Student Survey, 90 percent of students expressed their satisfaction with their education at the University of East Anglia, ranking it joint third mainstream university in the country. The figure was an increase from 89 percent last year, which bucks national trends where fewer students were satisfied with university provision.

## Housing

### Key Facts

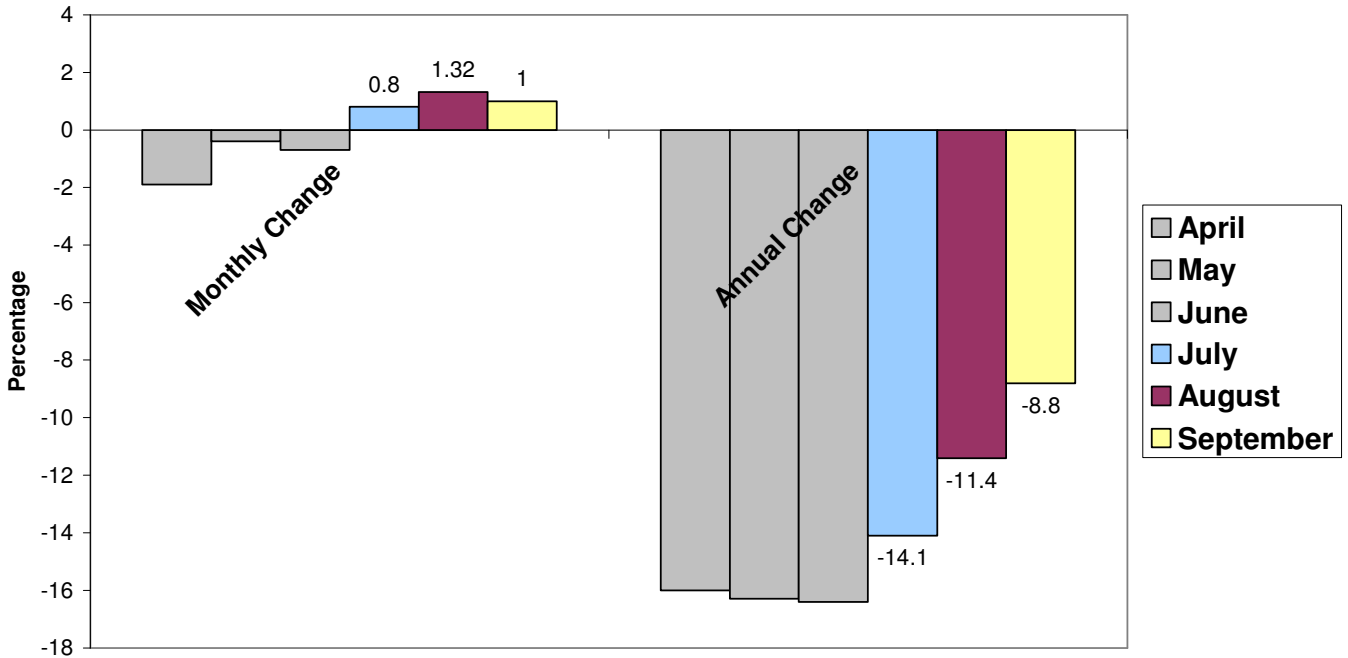
- UK house prices have averaged £161, 376 in this second quarter with a rise in prices of 2.45% between July and September (*Halifax*)
- Norfolk house prices have averaged £139, 833 in this second quarter with a rise in prices of 2.35% between July and September (*Land Registry*)
- Norfolk house prices are continuing to return to the prices seen a year ago, although at a slower rate than the rest of England & Wales, and have shown positive monthly rises, a contrast to last quarter.
- Suffolk house prices have averaged £144, 861 in this second quarter with a rise in prices of 1.80% between July and September (*Land Registry*)

## House Price Trends

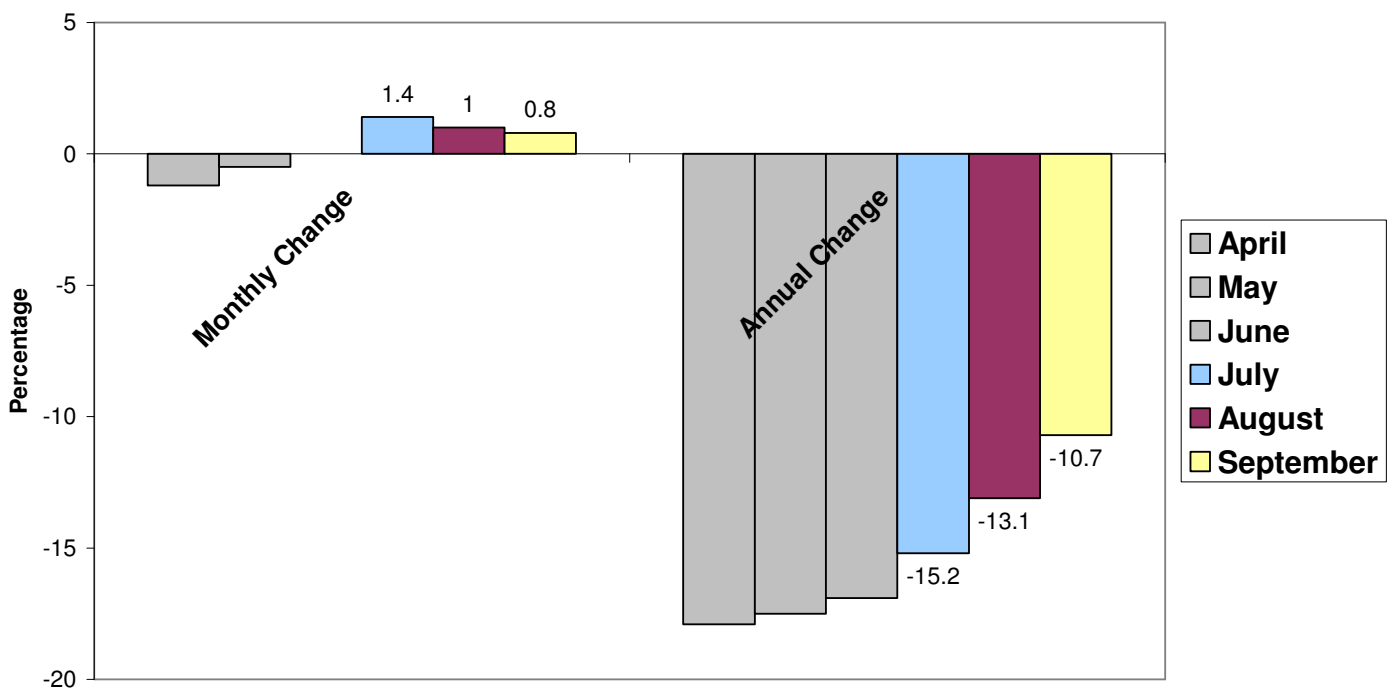


Source: Land Registry

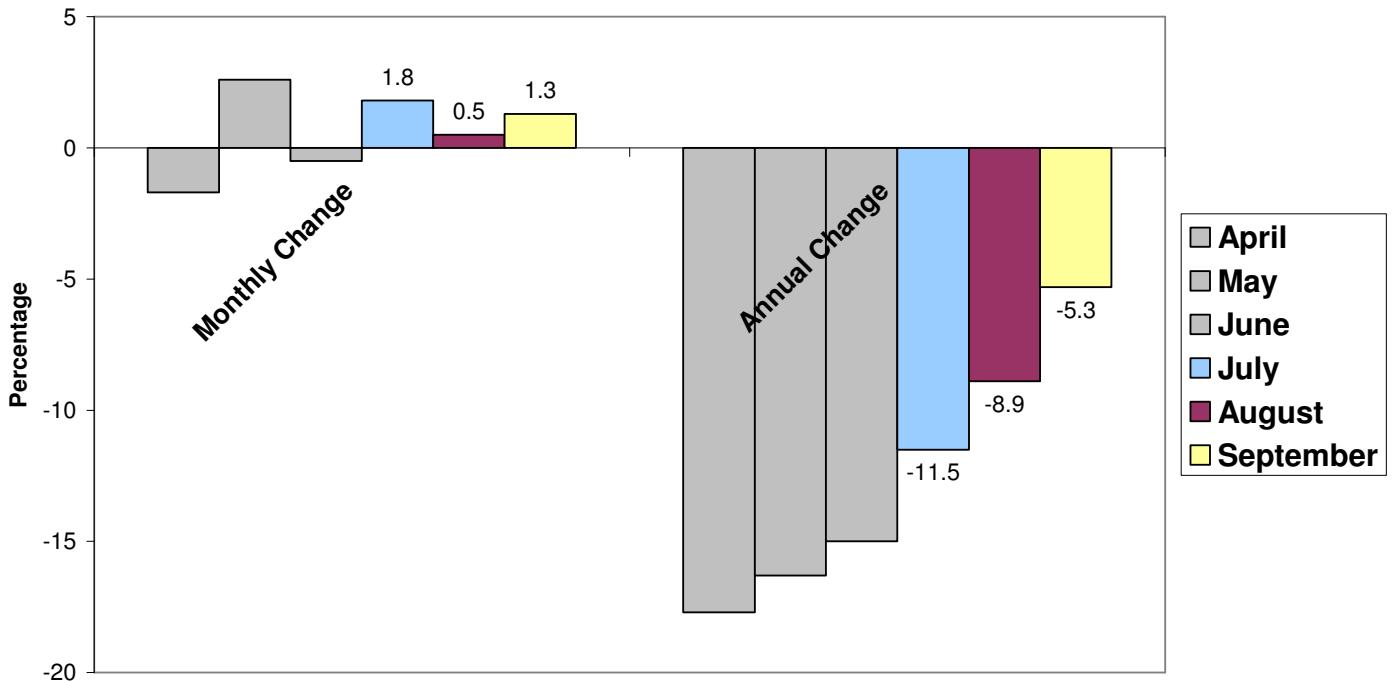
## Norfolk House Price Trends



## Suffolk House Price Trends



## England&Wales House Price Trends



More than 11,000 new homes could be built in the Waveney area over the next 20 years if a new blueprint gets the go ahead. The East of England Regional Assembly (EERA) has been asked by the Government to review its East of England Plan and extend its framework from 2021 to 2031. EERA has put forward four scenarios in its consultation which would see between 26,060 and 33,650 homes built each year from 2011 to 2031. Waveney District Council's allocation would rise nearly 300 percent from 290 homes per year to 850- leaving them with an extra 11,200 over the 20 year period.